

New Designergate Prisma

See EAS systems in a new light

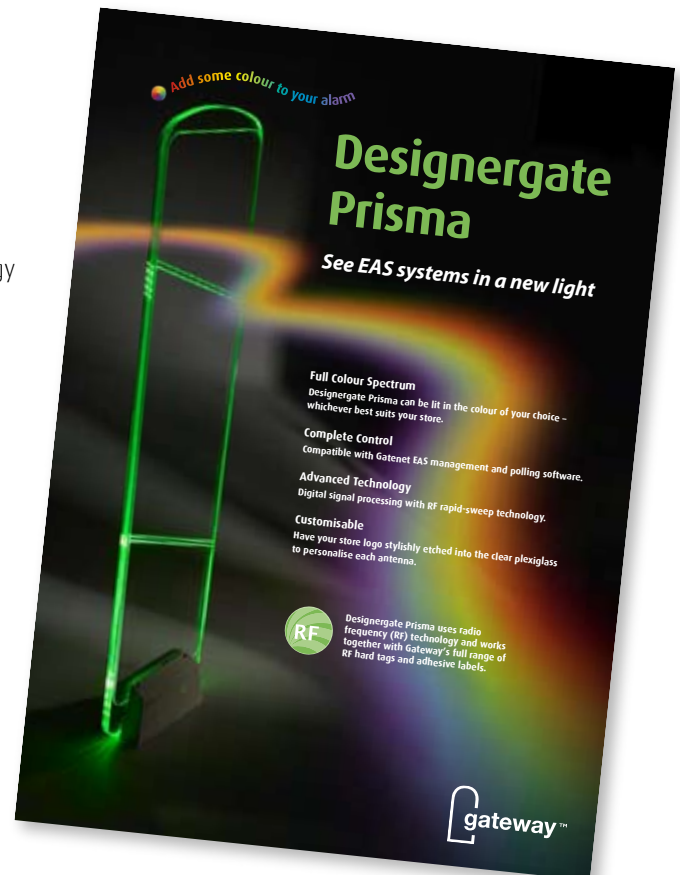
Designergate Prisma is Gateway's latest offering – illuminating plexiglass antennas which can be lit in the colour of your choice. When the alarm is triggered, the antennas flash red, then return to their preset colour once the alarm has stopped.

Additional Features

- Length and pattern of audio and visual alarm fully adjustable
- One-colour mode or constant transition between shades
- Store logo can be etched into the plexiglass
- Advanced digital signal processing with RF rapid-sweep technology
- Works with full range of Gateway RF hard tags and labels
- Discreet and elegant design
- Narrow footprint to save space
- Fully compatible with Gatenet management software

Availability

The Prisma material can be ordered from us as usual. Simply specify the amount you require in your next order form. If you require the material in a language other than English, please contact Ulrica Hedendahl (ulrica.hedendahl@gunnebo.com).



Sales Material – Available to order now for exhibitions and showrooms

A4 Display	Cardboard display with rear fold-out stand
Poster – Small	350x500mm poster
Poster – Large	500x700mm poster
3D Display Column	1.5m tall collapsable display. Light and easy to pack or carry. Double-sided with different colour antenna on each side.

(See page 2 for more details)

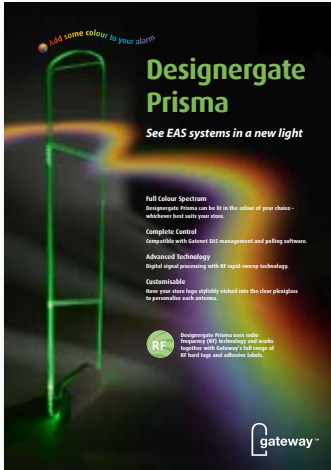


Sales Material
A range of specially-
designed Prisma
material is available
to order from us.

New Designergate Prisma

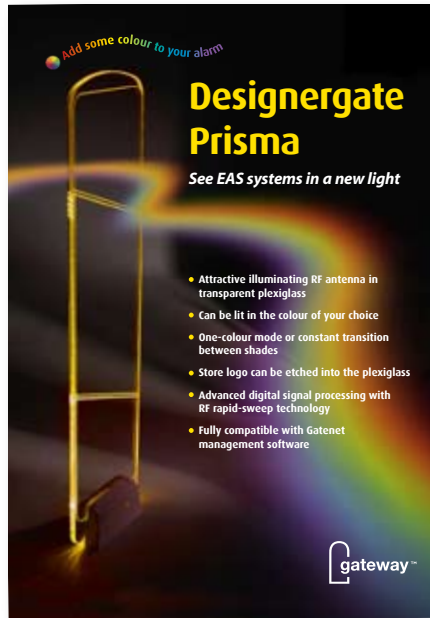
A4 Display

Format: 210 x 297



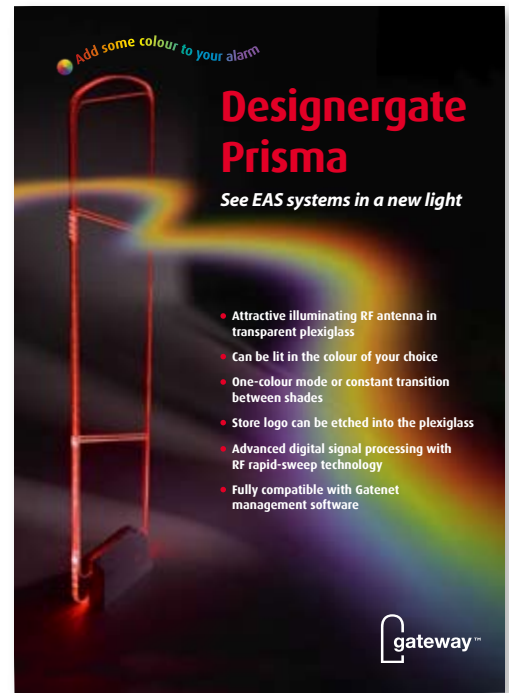
Poster – Small

Format: 350 x 500



Poster – Large

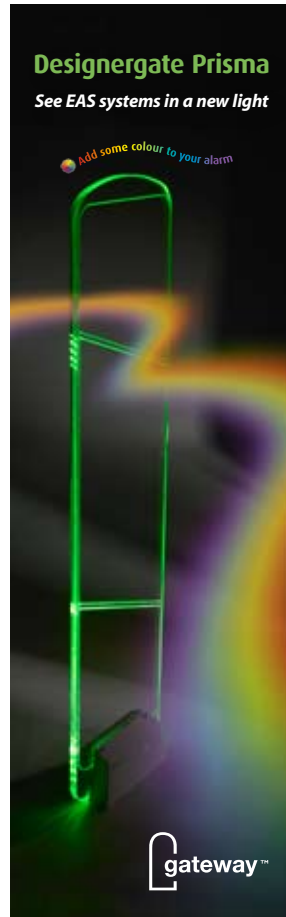
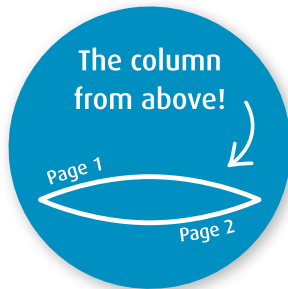
Format: 500 x 700



Three-Dimensional Display Column

2-sided

Format: 4800 x 15500



Dimensions in mm.